

COPPERMINE CREEK



For personal use only

CORPORATE PRESENTATION

April 2018

"Exploring for exciting commodities in Australia and Latin America"


Pacifico
Minerals Ltd

www.pacificominerals.com.au

ASX: PMY



Important Notices

Nature of this Document: The purpose of this presentation is to provide general information about Pacifico Minerals Limited (the 'Company'). Unless otherwise stated herein, the information in this presentation is based on the Company's own information and estimates. In attending this presentation or viewing this document you agree to be bound by the following terms and conditions.

Not an Offer: This presentation is for information purposes only and does not constitute or form any part of any offer or invitation to sell or issue, or any solicitation of any offer to purchase or subscribe for, any securities in the Company in any jurisdiction. This presentation and its contents must not be distributed, transmitted or viewed by any person in any jurisdiction where the distribution, transmission or viewing of this document would be unlawful under the securities or other laws of that or any other jurisdiction.

Not Financial Product Advice: This presentation does not take into account the individual investment objectives, financial situation and particular needs of each of the Company's Shareholders. You may wish to seek independent financial and taxation advice before making any decision in respect of this presentation. Neither the Company nor any of its related bodies corporate is licensed to provide financial product advice in respect of the Company's securities or any other financial products.

Forward-Looking Statements: Certain statements in the presentation are or may be "forward-looking statements" and represent the Company's intentions, projections, expectations or beliefs concerning, among other things, future operating and exploration results or the Company's future performance. These forward looking statements speak, and the presentation generally speaks, only at the date hereof. The projections, estimates and beliefs contained in such forward looking statements necessarily involve known and unknown risks and uncertainties, and are necessarily based on assumptions, which may cause the Company's actual performance and results in future periods to differ materially from any express or implied estimates or projections.

Disclaimer: No representation or warranty, express or implied, is made by the Company that the material contained in this presentation will be achieved or prove to be correct. Except for statutory liability which cannot be excluded, each of the Company, its directors, officers, employees, advisers and agents expressly disclaims any responsibility for the accuracy, fairness, sufficiency or completeness of the material contained in this presentation, or any opinions or beliefs contained in this document, and excludes all liability whatsoever (including in negligence) for any loss or damage which may be suffered by any person as a consequence of any information in this presentation or any error or omission there from. The Company is under no obligation to update or keep current the information contained in this presentation or to correct any inaccuracy or omission which may become apparent, or to furnish any person with any further information. Any opinions expressed in the presentation are subject to change without notice.

Unverified Information: This presentation may contain information (including information derived from publicly available sources) that has not been independently verified by the Company.

Monetary Values: Unless otherwise stated, all dollar values are in Australian dollars (A\$).

Subject to Change: The information in this presentation remains subject to change without notice.

Competent Person Statements: The information in this announcement that relates to the Violin Project, Borroloola West Project, South Australia exploration licence applications, Berrio Project, Urrao Project and Natagaima Tenement application is based on information compiled by Mr David Pascoe, who is a Member of the Australian Institute of Geoscientists. Mr Pascoe is contracted exclusively to Pacifico Minerals Limited. Mr Pascoe has sufficient experience which is relevant to the style of mineralisation and type of deposit under consideration and to the activity which he is undertaking to qualify as a Competent Person as defined in the 2012 Edition of the "Australasian Code for Reporting of Exploration Results, Mineral Resources and Ore Reserves". Mr Pascoe consents to the inclusion in this presentation of the matters based on information in the form and context in which it appears.



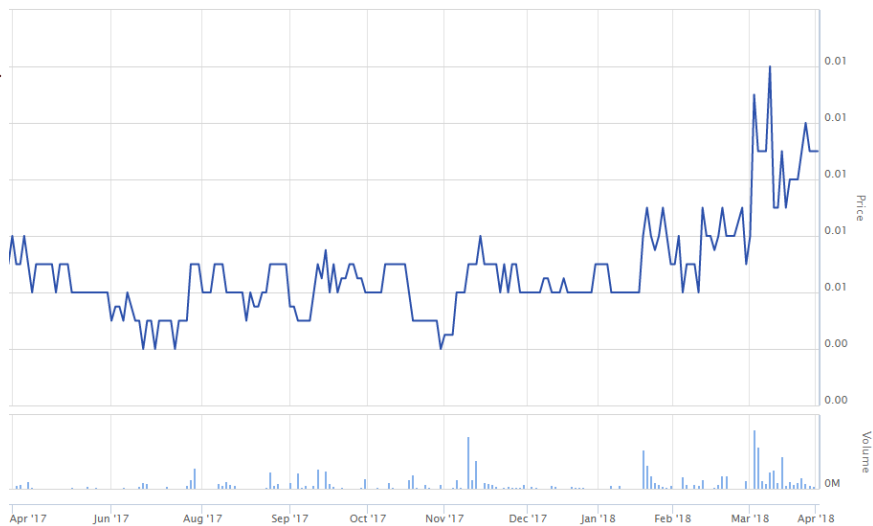
Corporate Snapshot

For personal use only

Experienced Board and Management

- Simon Noon** *Managing Director*
- Richard Monti** *Non Executive Chairman*
- Peter Harold** *Non Executive Director*
- Andrew Parker** *Non Executive Director*
- Barrie Bolton** *Head of Project Development*

PMY Share Price and Volume



Capital Structure

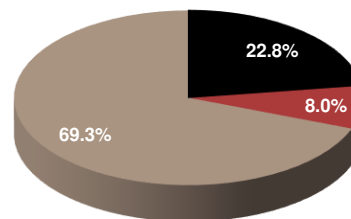


| | | |
|----------------------------|------------|------------|
| Share Price as at 29/03/18 | \$ | 0.011 |
| No. of Shares Outstanding | m | 887 |
| Options on Issue** | m | 27.5 |
| Market Cap | \$m | 9.8 |
| Cash as at 04/04/18 | \$m | 1.4 |
| Enterprise Value | \$m | 8.4 |

** Exercisable at 1.5c, expiring Nov 2020

Note: 62.5 million options exercisable at 1.5c, expiring 2 years from date of issue, are subject to upcoming shareholder approval.

Shareholder Breakdown (Top 20 holds 39%)



■ Institutions/Funds ■ Directors/Management ■ Other

Investment Highlights

For personal use only.

Board and Management team with proven track record of identifying, funding and developing projects.

\$1.4m in cash reserves (April 2018), low market cap and significant upside.

Advanced stage potential acquisitions under review to compliment exploration project portfolio.



Australia

- Pacifico operates a JV project in McArthur Basin with Sandfire Resources NL (PMY 51% / SFR 49%).
- Drill program to commence April 2018 aiming to define Inferred Copper Oxide Resources at Lorella prospect.
- Exploring for Mt Isa Style Copper-Cobalt, Sedex Zinc and Heap Leachable Oxide Copper.
- New tenement applications prospective for 'battery metals' (Co, Mn, Cu) in South Australia).



Mexico

- Recently secured Violin Project has outstanding potential for major gold-copper deposit.
- Sediment hosted zinc-lead-silver prospects.
- Exploration underway.



Colombia

- Pipeline of quality precious and base metals with promising exploration results to date.
- Valuable in-country experience with Pacifico operating in Colombia since 2011.



Our Projects

For personal use only





Violin Project

Gold, Copper (Zinc, Silver, Lead) Project, Guerrero, Mexico



Image: Guerrero Gold Belt

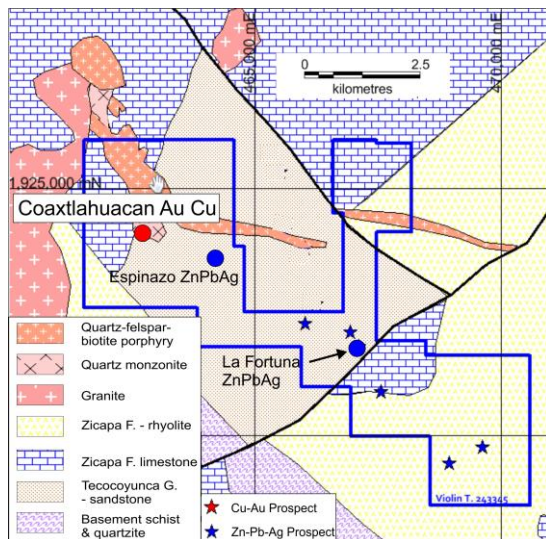


Image: Violin Project – Tenure, Geology and Mineralisation

| Major Deposits of the Guerrero Gold Belt | | | | | |
|--|---------------------------|------------|-----------|-----------|-------------|
| Deposit | Tonnes | Au Grade | Au oz | Company | Status |
| Los Filos & El Bermajal ¹ | 639 Mt (mined + reserves) | 0.75g/t Au | 15Moz Au | Leagold | Mining |
| El Limon-Guajes ² | 46 Mt | 2.7g/t Au | 4Moz Au | Torex | Mining |
| Media Luna ² | 51 Mt | 4.5g/t Au | 7.4Moz Au | Torex | Evaluation |
| Ana Paula ³ | 18 Mt | 2.2g/t Au | 1.3Moz Au | Alio Gold | Feasibility |

Violin Project Overview

- Option to purchase 100% interest in Violin Gold-Copper Project in Guerrero Gold Belt of Mexico.
- Highly attractive acquisition terms⁴.
- Major intrusive-skarn related mineralisation indicated by extensive, strong gold and copper soil anomalies, and coincident magnetic highs.
- Several multi-million ounce gold mines and developing projects of this mineralisation style in the Guerrero Gold Belt.
- Exploration recently commenced, drill targets to be confirmed, drilling to follow as soon as practical.

¹ Leagold, NI 43-101 Technical Report, Los Filos, March 2017
² Torex Gold Resources Inc (<https://www.torexgold.com/projects>)
³ Alio Gold (<https://www.aliogold.com/assets>)
⁴ ASX Announcement 15 March 2018



Violin Project cont.

Coaxtlahuacan Prospect (Gold, Copper), Guerrero, Mexico

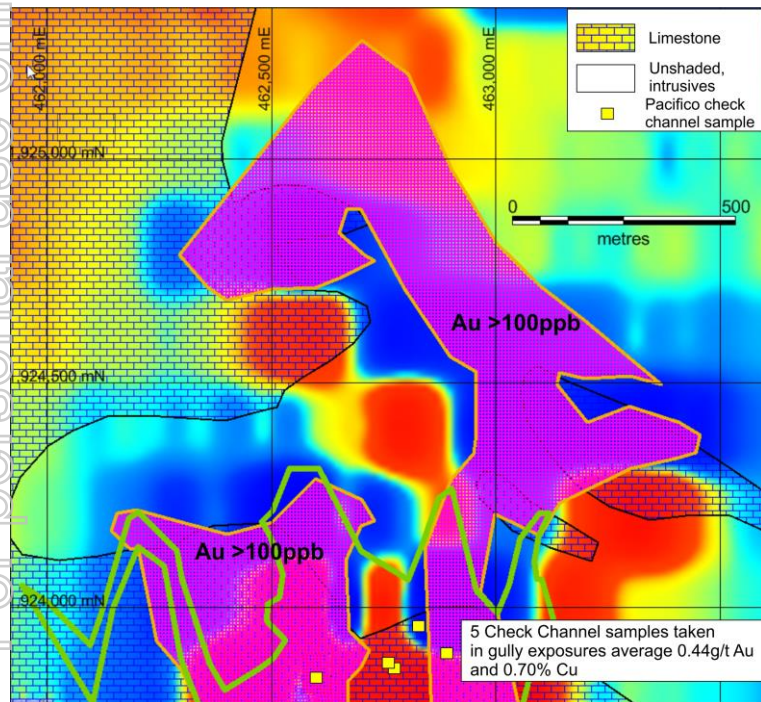


Image: Coaxtlahuacan Prospect – Ground Magnetics, Gold (Purple) and Copper (Green Line >300ppm) Geochemistry

Coaxtlahuacan Prospect¹ Overview

- Outstanding potential for a large and significant gold-copper deposit.
- Major gold anomaly (>100ppb Au, with values up to 2161ppb Au) covering an area of 1500m x 200m.
- Significant gold in soils geochemistry, >50ppb Au, over an area of 1.6km x 1.3km.
- Surface leaching of copper, anomalous in gullies and low areas only.
- Coincident ground magnetics.
- Rock chip geochemistry (Pacifico sampling) - averages 0.44g/t Au and 0.70% Cu.

¹ ASX Announcement 15 March 2018



Borroloola West JV Project

Zinc, Copper (Cobalt, Silver, Lead, Manganese) Project, NT, Australia



Image: McArthur and Mount Isa Basins and Borroloola West Project Area

Borroloola West Joint Venture Overview

- Pacifico operates and has 51% interest in the Borroloola West Joint Venture (BWJV) with Sandfire Resources NL (49%).
- Sandfire contributing their share of exploration costs for upcoming aircore program (Lorella).
- Project area covers ~1800km² within the McArthur/ Mt Isa Basins, host to several world class mines including McArthur River, Mount Isa, Teena and Century.
- High potential for both oxide and primary copper resources at Lorella indicated by previous drilling.
- Potential for large sediment hosted deposits at Coppermine Creek (copper-cobalt), and Mariner (zinc-lead). Drill targets to be established following promising drill¹ and rock chip sample results².

Limestone Creek Application (100% Pacifico Owned)

- Stand out RC drill targets at Limestone Creek (zinc-lead).
- Tenement granting imminent.

¹ ASX Announcement 17 October 2017

² ASX Announcement 29 December 2017



Borroloola West Project

Lorella Prospect (Copper), NT, Australia

Lorella Prospect Overview

- Consistent oxide copper mineralisation, even distribution of grades, beneath just 20m to 30m of alluvium:
- Intersections include¹:

| Drill Hole | Interval | Vertical Thickness and Copper Grade |
|------------------|-----------|-------------------------------------|
| 11BLD0006 | 28 to 43m | 15m of 1.3% Cu |
| BLRC032 | 20 to 26m | 6m of 1.8% Cu |
| BLRC047 | 20 to 28m | 8m of 1.1% Cu |
| BLRC094 | 24 to 38m | 14m of 1.2% Cu |
| BLRC098 | 26 to 32m | 6m of 1.1% Cu |

- Aircore drilling program (40 holes/2000m) to commence April 2018 to test stratabound mineralised horizon which could extend for 12km.
- Exploration target* of 5 to 10Mt of 0.8% Cu to 1.1% Cu of shallow oxide copper mineralisation¹.
- Preliminary acid leach testwork on oxide copper returned high recoveries with low acid consumption.
- Potential to produce cathode copper from solvent extraction, electrowinning operation (“SXEW”) with low start-up costs.
- RC and PQ diamond drilling to follow Aircore program (subject to positive results), aiming to define Inferred Resources.

¹ ASX Announcement, 20 November 2017

*Exploration Targets are conceptual in nature and there has been insufficient exploration to estimate a Mineral Resource under the JORC code, 2012 edition. It is uncertain if further exploration will result in the estimation of a Mineral Resource.

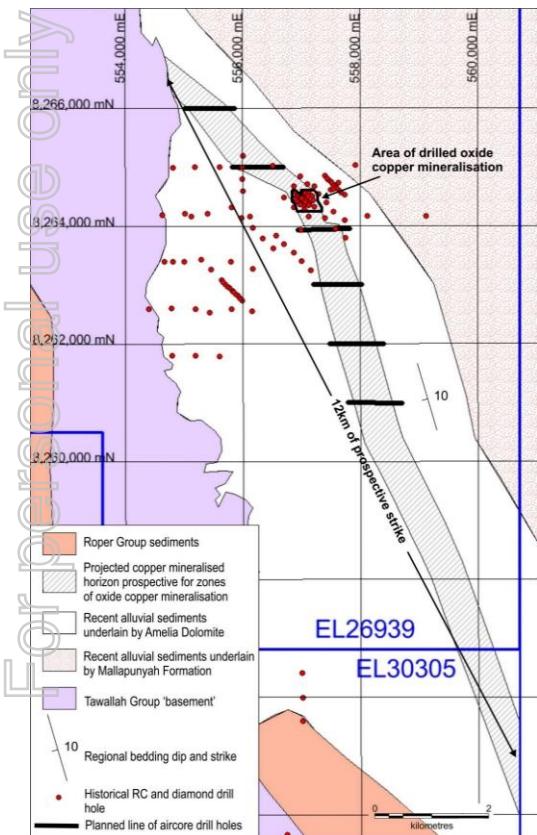


Image: Lorella Prospect Showing Projected Suboutcrop of Mineralized Horizon and Planned Aircore Lines



Borroloola West Project cont.

Coppermine Creek (Copper), NT, Australia

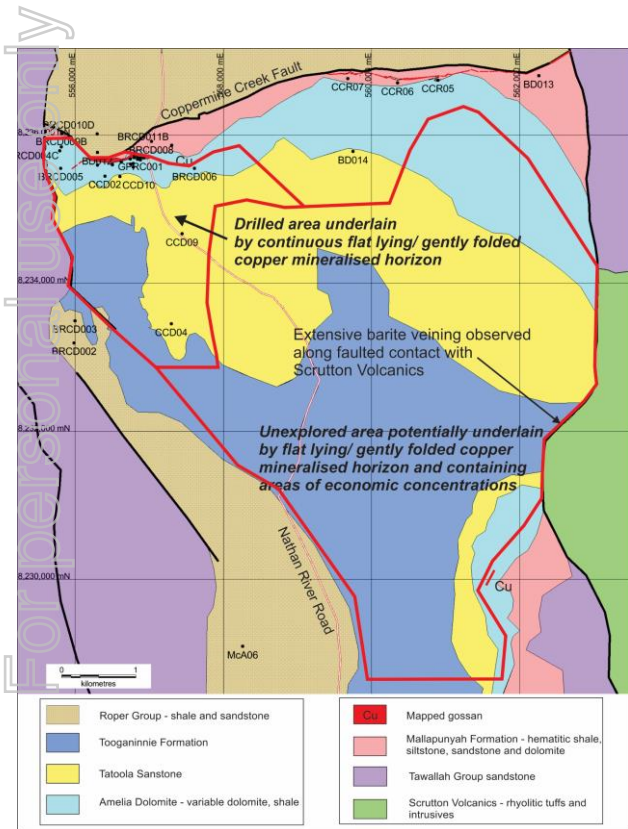


Image: Drill Core CCD03 Semi-Massive Chalcopyrite Bands

Coppermine Creek Overview

- Thick continuous stratabound copper mineralised horizon, outcrop and drill intersected over an area of 1.5 x 3km, open 6km to the south and unexplored.
- Copper mineralisation is shallow – intersection depths 50 to 250m, within gently dipping stratigraphy.
- Intersections to date¹ include:
 - GPRC07 – 15m of 1.9% Cu
 - CCD03 – 5m of 2.5% Cu
 - CCR08 – 23m of 0.7% Cu
- Next stage of exploration will focus around major structures at the margin of the sub-basin as found with the Mount Isa copper deposit.

¹ ASX announcement 9 February 2017 – summary of results from table 1 (0.3% Cu cut-off)

Image: Geological Map with Possible Extent of Copper Mineralised Horizon



Borroloola West Project cont.

Limestone Creek Application (Zinc-Lead), NT, Australia

For personal use only

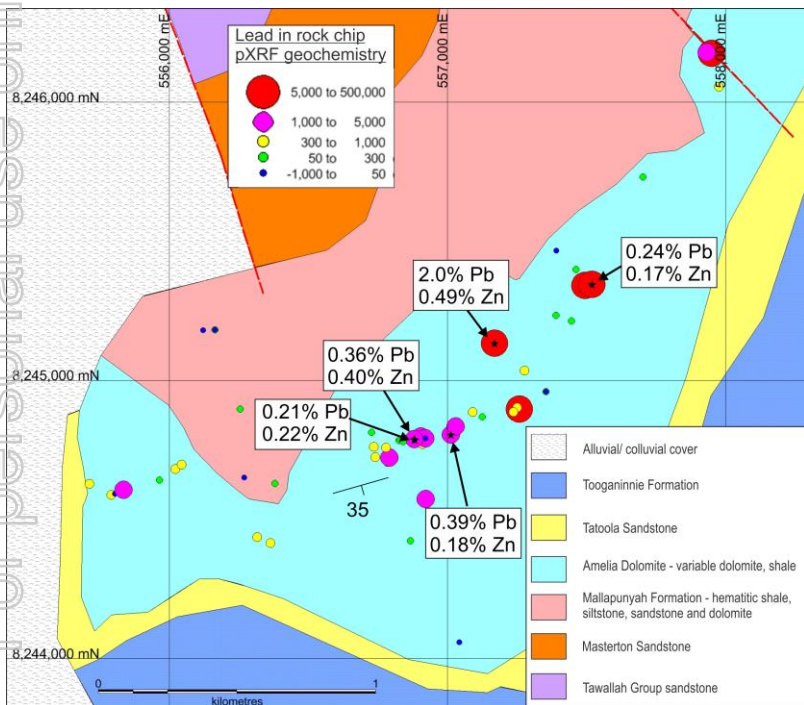


Image: Limestone Creek - Geology and Lead, Zinc Geochemistry

Limestone Creek Application Overview

- Lies within Exploration Licence Application 31354 – 100% Pacifico owned.
- Gossanous breccia, 600m strike, rock chips up to 0.49% Zn and 2.0% Pb – significant values from highly weathered leached terrane¹.
- Mineralisation associated with ex-evaporite horizons.
- High priority drill targets already defined.
- RC drilling planned to commence Q2 2018 subject to licence granting.

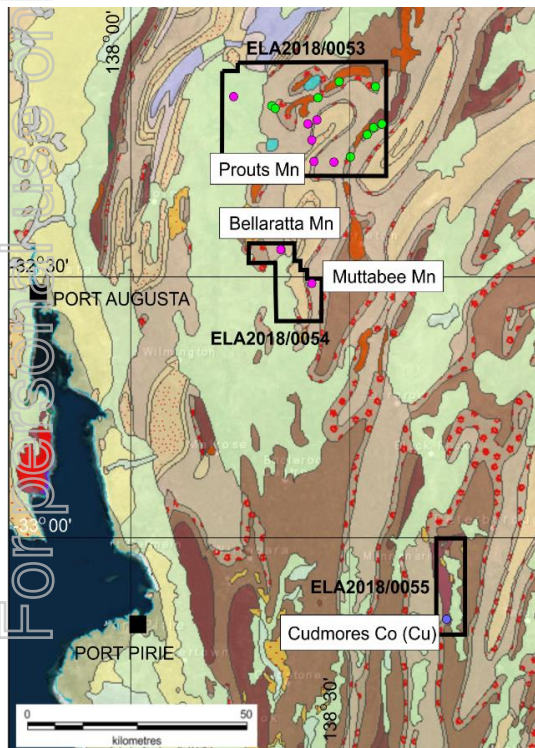
¹ ASX Announcement 30 October 2017



Exploration Licence Applications

Three Project Areas (Cobalt, Manganese, Copper), SA, Australia

FORNEX



- 3 Exploration Licence Applications recently secured in South Australia.
- Known cobalt, copper and manganese prospects¹.
- Cudmores Co (Cu) Prospect.
- Prouts, Bellaratta and Muttabee Mn Prospects.
- Several copper prospects.
- Review of historical data and exploration planning underway.

¹ All historical prospect information is derived from the South Australia Information Gateway (SARIG) at <https://map.sarig.sa.gov.au>



Image: Pacifico's EL Applications, Geology and Recorded Mineralisation Occurrences

Colombia - Pipeline of Quality Projects

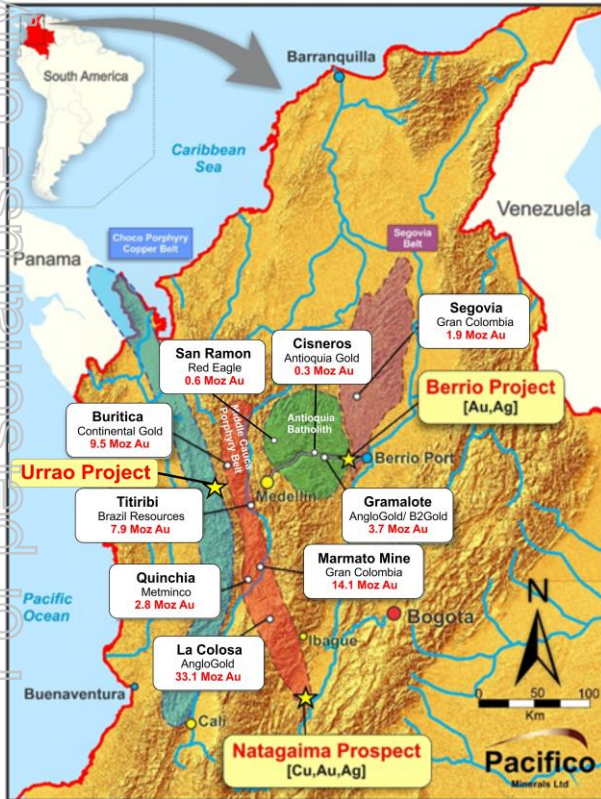


Image: Key Tenement Application and Project Locations

- Pacifico's valuable in-country experience (operating since 2011) has allowed the company to secure a range of exciting precious and base metal prospects.
- Majors now operating in Colombia include AngloGold Ashanti, Anglo American, BHP and Glencore.
- Pacifico's tenement applications totalling >46,000ha are associated with highly prospective geological terrains including:
 - Choco Porphyry Copper Belt
 - Middle Cauca Porphyry Belt
 - Antioquia Batholith
- At Pacifico's 100% owned Nataigaima tenement application selective grab sampling¹ obtained grades up to 8.4g/t Au, 1,395g/t Ag, 6.2% Cu, 9.3% Pb and 1.1% Zn.

¹ ASX announcements 28 April and 27 January 2015. Selective grab samples may not be representative.



Berrio Project

Gold Project, Antioquia, Columbia

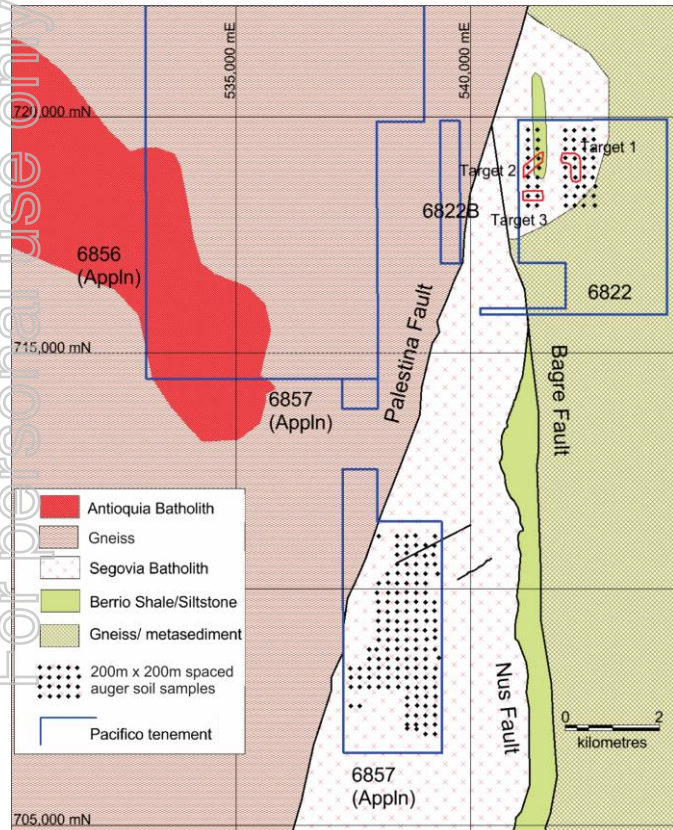


Image: Geology and Granted Tenement 6822 and Tenement Applications 6856 and 6857 (All 100% Pacifico Owned)

Berrio Project Overview

- Situated within the Segovia gold belt, the most prolific gold belt in Colombia from which gold has been exploited for 150+ years.
- Gold analyses received from auger soil sampling 200 x 200m grids have delineated several anomalies over area of 1.2km x 1.0km¹.
- Sampling grids covered areas of the Segovia Batholith and adjoining Berrio sediments prospective for large gold systems in vein and stockwork systems.
- Follow up soil sampling with a grid spacing of 100 x 100m continuing, aiming to define drill targets.

¹ ASX Announcement 24 October 2017



Near Term Investment Catalysts

For personal use only



Exploration recently commenced on major gold-copper project acquired in Mexico.
Regular updates and drilling (May – September 2018).



Drilling to commence April 2018 on the McArthur Basin JV (ASX:PMY 51% - ASX: SFR 49%).
Results and regular updates (May 2018 onwards).



Granting of South Australia EL applications¹ over ground prospective for Co, Mn, Cu (Q2 2018).
Review of historical data (April 2018).



Berrio gold project infill soil sampling aiming to define diamond drill targets ongoing.



Granting¹ of a new highly prospective 100% owned exploration licence (ELA 31354, Limestone Creek) containing high priority zinc targets (expected Q2 2018).



Advanced stage potential acquisitions under review to compliment exploration project portfolio.

¹ Grant subject to S.29 Native Title Act and S.71 MTA Objections



Contact Us

For personal use only



Perth Office L10, 553 Hay Street, Perth WA 6000



Postal Address PO Box Z5487, Perth WA 6831



Email info@pacificominerals.com.au



Website www.pacificominerals.com.au



Telephone + 61 (0)8 6266 8642

Facsimile + 61 (0)8 9421 1008